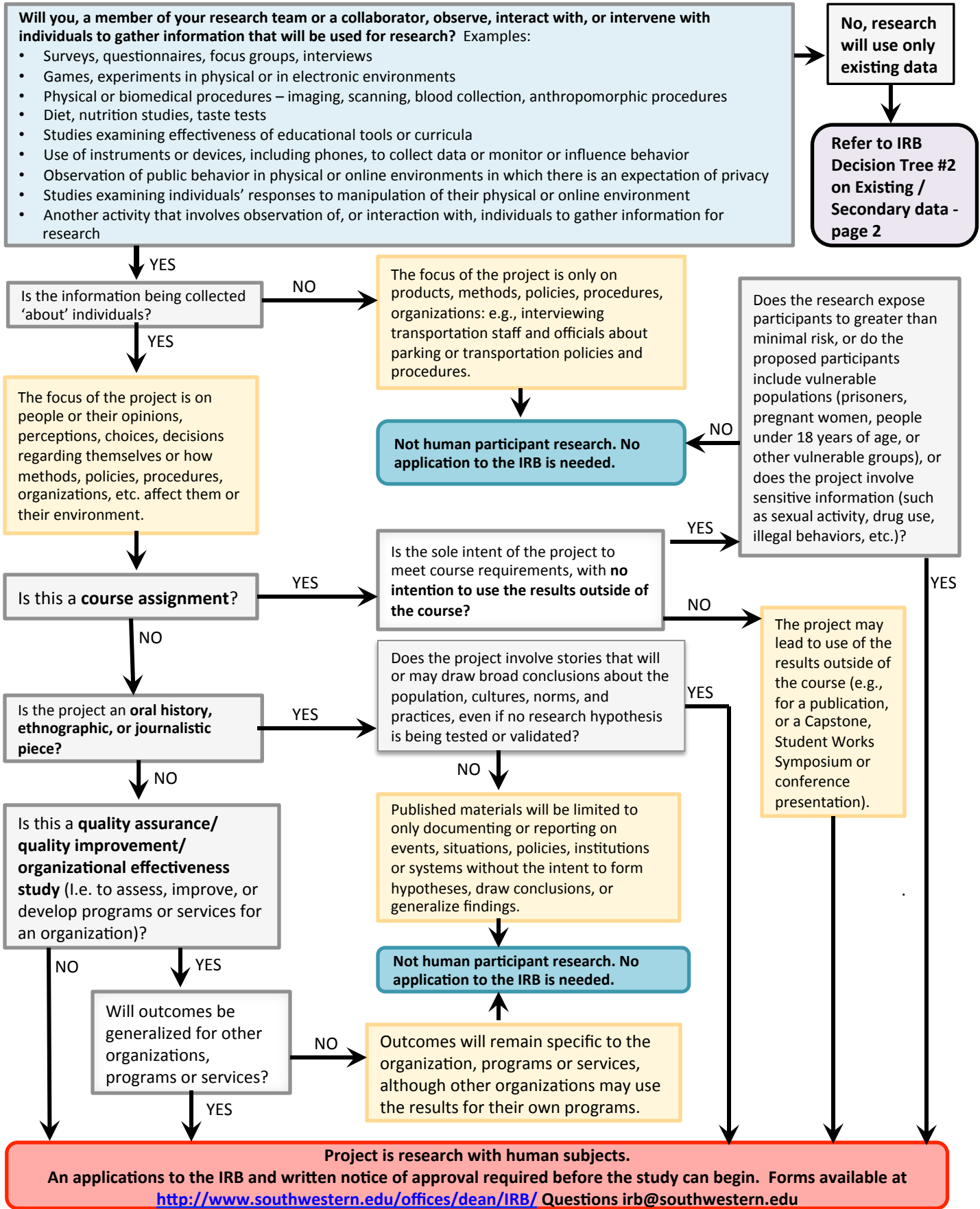
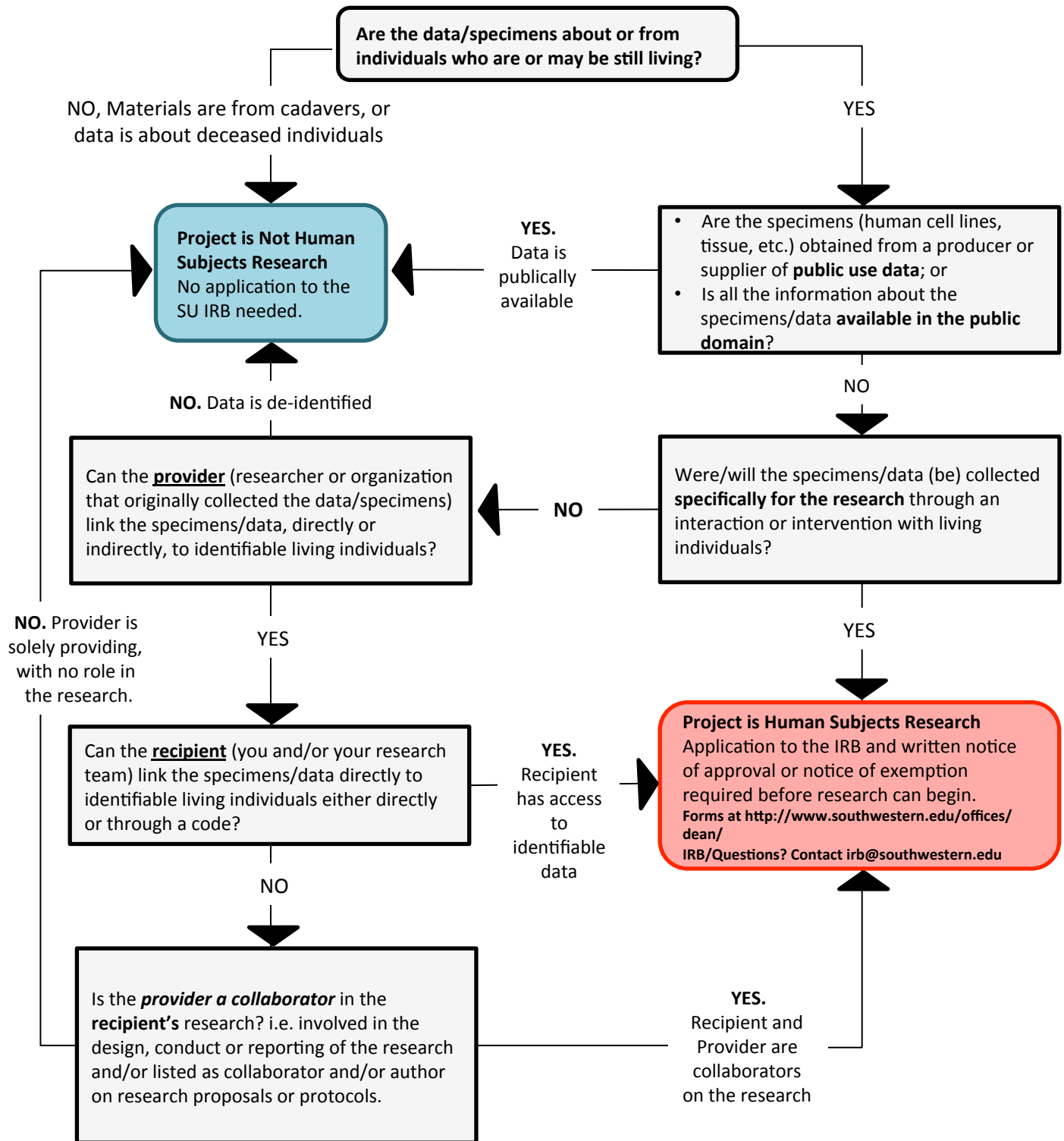


# Does Your Project Require an Application to the Southwestern Institutional Review Board (IRB)?

## DECISION TREE #1



**Does Your Research Involving Secondary or Existing Data, Documents or Biological Specimens  
Require Review by the Southwestern IRB  
DECISION TREE #2**



All Forms at <http://www.southwestern.edu/offices/dean/IRB/>  
 Questions? Contact [irb@southwestern.edu](mailto:irb@southwestern.edu)  
 Decision trees adapted with permission from the Cornell University IRB Decision Tree-  
<https://www.irb.cornell.edu>