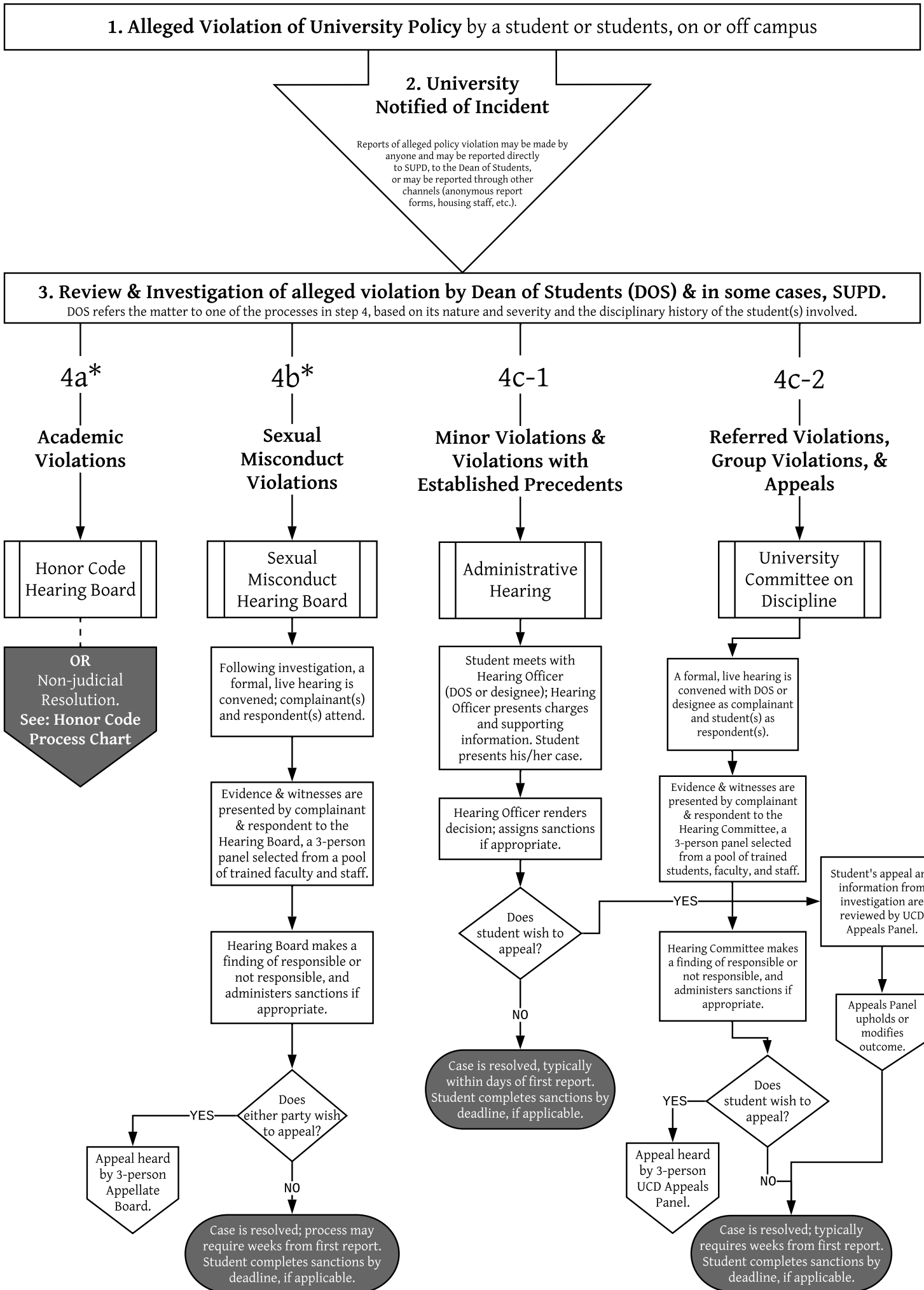


# How Southwestern Responds to Violations of University Policy



**Sanctions**

Sanctions are imposed with consideration of the nature and severity of the incident and the disciplinary history of the respondent(s). More detailed descriptions of sanctions listed below can be found in the current *Student Handbook*.

**Sanctions may include, but are not limited to:** Contract Probation, Disciplinary Probation, Expulsion, Fees and Fines, Loss of Privileges, Mandated Counseling, Mandated Counseling Assessment, Mandated Off-Campus Assessment, Mandated Housing Reassignment, Mandatory Housing Relocation and Class Scheduling, Parental Notification, Physical Restrictions, Restitution, Social Probation, Special Program or Projects, Suspension, and the following which apply to student organizations: Alcohol Ban, Expulsion, Mandated Educational Programs, National Organization Contact, Prohibition of recruiting, adding, and/or inducting new members, Social Probation, Suspension.

\*Violations of the Honor Code, the Sexual Misconduct policy, and the Title IX policy are adjudicated through prescriptive processes which are described comprehensively in the *Student Handbook* and in the Title IX policy.