

Post-Graduate Survey Class of 2015 Highlights

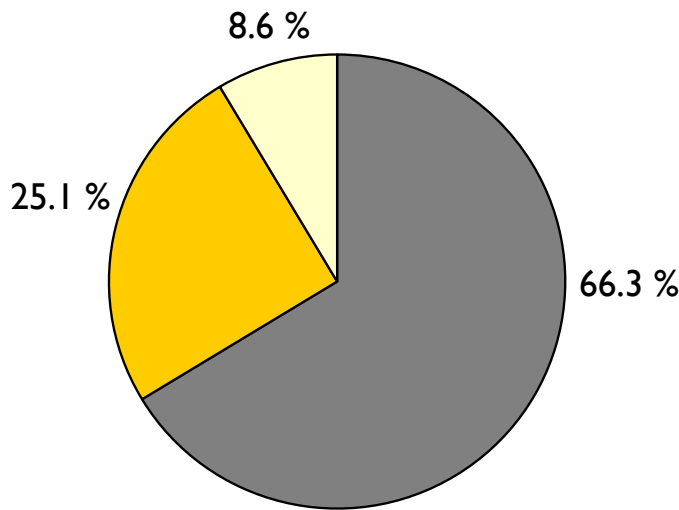
About the Survey

The Class of 2015 Post-Graduate Survey, conducted by Southwestern University Career Services, was completed in March 2016. Graduating seniors were contacted beginning in April 2015 via email, in person at Commencement in May, with a follow-up email in October, via three phonathon sessions in December 2015, January 2016 and February 2016 and with repeated follow-up emails and phone calls into March 2016. Of the 295 graduates from December 2014, May 2015 and August 2015 who make up this reporting class, Career Services obtained information on 291 (99 percent of the class).

If you would like more information, please contact Career Services at career.services@southwestern.edu or 512.863.1346.

Where is the Class of 2015 now?

Respondents reported their primary activity after graduation as:



66.3 % Employed

25.1 % Graduate/Professional School or
 Advanced Coursework

8.6 % Other (Seeking/Volunteering)

Responses by School/Division

Forty-nine graduates earned double majors. In this view of outcomes by division/school, double-majors are counted in each major. Percentages may not total 100 due to rounding.

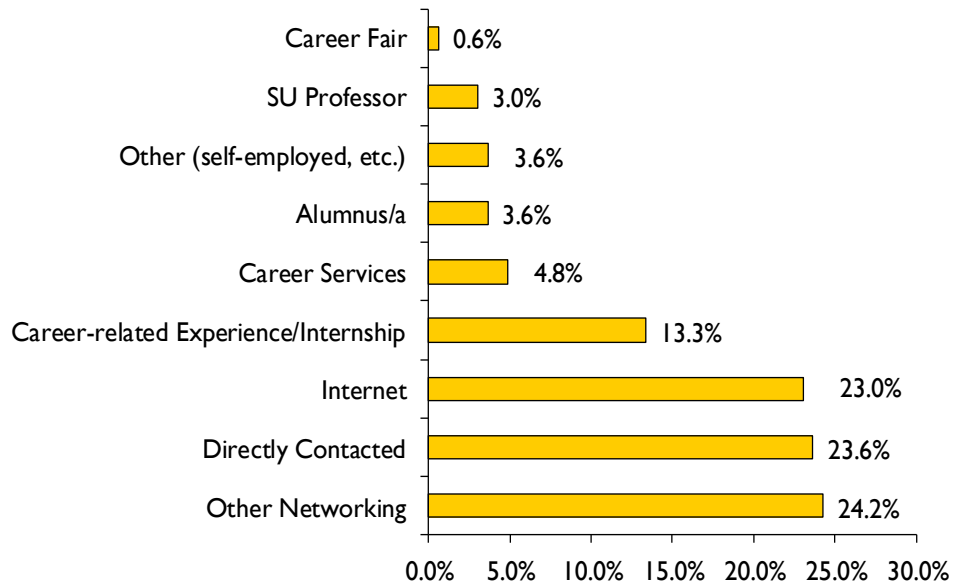
	<i>Employed</i>	<i>Graduate / Professional School / Advanced Coursework</i>	<i>Other</i>
Brown College of Arts and Sciences			
Division of Humanities	73.0 %	20.2 %	6.7 %
Division of Natural Sciences	56.0 %	38.7 %	5.3 %
Division of Social Sciences	72.1 %	18.9 %	9.0 %
Sarofim School of Fine Arts	61.3 %	29.0 %	9.7 %
Independent/Interdisciplinary majors	63.6 %	22.7 %	13.6 %

Employment

Two-thirds of all survey respondents reported entering the world of work upon graduation.

How did they locate positions?

For employed graduates who reported the method by which they secured their positions, networking remained the most impactful search strategy. When also including more specific networking with alumni, professors and Career Services, about 35 percent of positions were secured through networking. Directly contacting employers and using the Internet followed closely behind the strategy of networking with family and friends. These three strategies continue to be the most effective for grads.



Where are they working?

The majority (80 percent) of respondents work in Texas, while 18 percent work in 19 other states and two percent work internationally in Bulgaria, England, France and Guatemala

The most frequently represented work locations are:

- 80 % Texas
- 2.6 % California
- 2.1 % Washington, DC

When did they begin their search?

Grads employed or seeking employment who responded about their job search process reported beginning:

- 20 % Before senior year
- 24 % Fall semester of senior year
- 23 % Beginning of spring of senior year
- 14 % End of spring of senior year
- 19 % After graduation

What do they earn?

Respondents working full-time who reported annual salaries earn:

- 37 % less than \$30,000
- 45 % \$30,000 to \$50,000
- 18 % more than \$50,000

Employment

Selected employing organizations and positions of the Class of 2015

Accenture, <i>Technology Analyst</i>	Mary Crowley Cancer Research Centers, <i>Data Coordinator</i>
Applied Materials, Inc., <i>Purchasing Analyst</i>	Omnitracs, LLC, <i>Associate Software Engineer</i>
Aristotle Inc., <i>Developer</i>	PhysAssist Scribes, Inc., <i>Medical Scribe</i>
AXA Advisors, <i>Financial Advisor</i>	Planned Parenthood of Greater Austin, <i>Health Center Assistant</i>
Booz Allen Hamilton Inc., <i>Business Systems Analyst</i>	PMB Helin Donovan, LLC, <i>Staff Auditor</i>
Brown, Graham & Company, P.C., <i>Staff Accountant</i>	SHI International, <i>Inside Account Executive</i>
Charles Schwab Corporation, <i>Stock Broker</i>	Southwestern University, <i>Financial Aid Counselor</i>
CHASCO Family YMCA, <i>Site Coordinator</i>	Spiceworks Inc., <i>Test Automation Engineer</i>
Chester Zoo, <i>Reptile and Invertebrates Intern</i>	State Representative Four Price (TX), <i>Legislative Assistant</i>
City Year (an AmeriCorps program), <i>Mentor</i>	Teach for America, <i>Secondary Social Studies Teacher</i>
Cricket Farms with Aspire Food Groups, <i>Assistant Manager</i>	Texas Physical Therapy Specialists, <i>PT Technician</i>
Dell, Inc., <i>Sales Support Senior Analyst</i>	The Daily Dot (Daily Dot, LLC), <i>Marketing Associate</i>
Denver Math Fellows (via AmeriCorps), <i>Math Fellow</i>	The Fund for American Studies, <i>Program Advisor</i>
Depository Trust and Clearing Corporation (DTTC), <i>Risk Analyst</i>	The Walt Disney Company, <i>Cast Member</i>
Fountainhead Press Inc., <i>Sales Representative</i>	Tree Folks, <i>Program Assistant</i>
Houston ISD, <i>Kindergarten Teacher</i>	Union Pacific Railroad, <i>Associate Application Developer</i>
Houston Rockets, <i>Marketing Associate</i>	University of Houston, <i>Post-Baccalaureate Research Assistant</i>
Human Behaviors, LLC, <i>ABA Therapist</i>	Uplift Education: Uplift Heights Preparatory, <i>Second Grade Teacher</i>
Indicative, <i>Software Engineer</i>	US Navy, <i>Ensign</i>
Iniosante Studios, LLC, <i>Video Production Editor</i>	US Student Fulbright Program, <i>English Teaching Assistant</i>
kidsActing Studio, <i>Musical Director</i>	VRL Laboratories - Southwest, <i>Infectious Disease Technologist</i>
Leander ISD, <i>8th Grade Social Studies Teacher</i>	Waco ISD, <i>Special Education/Inclusion Teacher</i>
Lifeworks (via AmeriCorps), <i>Workforce Development VISTA</i>	Willis Towers Watson, <i>Retirement Service Center Associate</i>
Lincoln Institute of Land Policy, <i>Latin America and Caribbean Program Assistant</i>	World Affairs Council of Dallas/Fort Worth, <i>Membership & Development Associate</i>
Main Street Hub, <i>Community Manager</i>	Zurich Insurance Group, Ltd., <i>Underwriter Trainee</i>

A liberal education prepares students broadly for many kinds of jobs. In general, majors do not correlate directly with specific job titles. Instead, graduates evaluated their satisfaction with their outcomes, and how well their outcomes match their expectations and meet their interests. Those who reported on these questions stated:

What type of employment is it?

- 0.7 % Military service
- 2.1 % Freelancer/Entrepreneur
- 4.2 % Post-graduate internship or fellowship
- 4.9 % Temporary/contract work assignment
- 6.9 % Volunteer service (e.g. AmeriCorps)
- 81.3 % All other employment

Is the work in their field of interest?

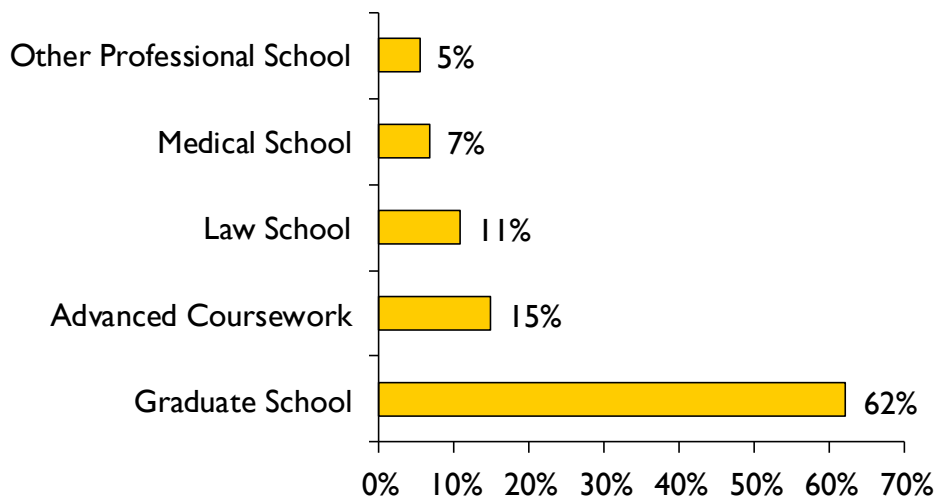
- 48 % Completely
- 44 % Somewhat
- 9 % Not at all

How satisfied are they with their outcome? How well does the outcome match their expectations?

- | | |
|------------------------------|--------------------------------------|
| • 41 % Very happy | • 35 % Meets expectations |
| • 35 % Satisfied | • 36 % Close to meeting expectations |
| • 21 % Slightly unsatisfied | • 20 % Does not match but is happy |
| • 4 % Completely unsatisfied | • 9 % Does not match and is unhappy |

Graduate / Professional School and Advanced Coursework

About a quarter of the Class of 2015 continued their education directly after graduation from Southwestern in graduate and professional programs or through advanced coursework such as prerequisite coursework for graduate study, additional coursework toward teacher certification, a second Bachelor's degree or other programs. Of those continuing their studies, they did so in the following ways:



Where are they studying?

The majority (63 percent) of respondents continued their studies in Texas, while 35 percent are enrolled in 16 other states. Two studied internationally in Taiwan and Spain. The most frequently represented locations are:

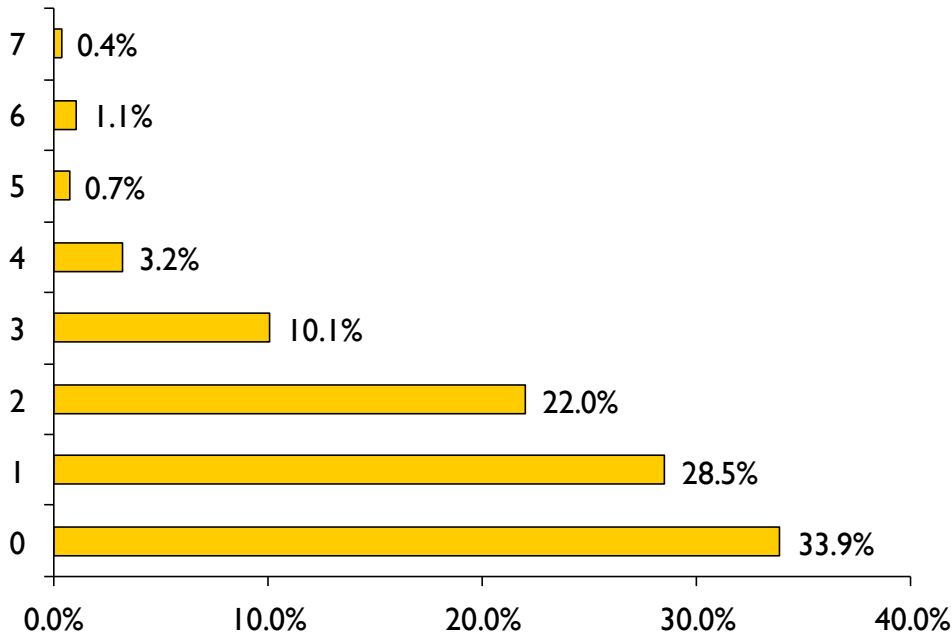
- 63 % Texas
- 5.6 % California
- 4.2 % Washington
- 2.8 % Indiana
- 2.8 % Massachusetts
- 2.8 % Missouri
- 2.8 % Oklahoma

Selected institutions / programs of study

American University, *MS in International Affairs*
 Baylor School of Law, *JD*
 DePaul University College of Law, *JD*
 Indiana University, *MM in Opera Studies*
 National Cheng Kung University, *MS in Natural Disaster Mitigation and Management*
 Portland State University, *PhD in Applied Psychology (Community Psychology)*
 Rice University, *PhD in Materials Science & Nanoengineering*
 Seattle Film Institute, *MM in Film Composition*
 Seminary of the Southwest, *MA in Religion*
 Smith College, *MSW*
 South College, *DPT*
 St. Edward's University, *MA in Counseling*
 Tufts University Cummings School of Veterinary Medicine, *DVM*
 University of Houston, *MArch (Master of Architecture)*
 University of Maryland, *PhD in Bioengineering*
 University of North Carolina, *PhD in French*
 University of North Texas Health Science Center, *Master of Physician Assistant Studies*
 University of North Texas, Texas College of Osteopathic Medicine, *DO*
 University of Oklahoma, *PhD in Political Science*
 University of Pennsylvania, *PhD in Cell Biology, Physiology, and Metabolism*
 University of Texas Health Science Center, Houston, *MPH*
 University of Texas Health Science Center, San Antonio, *DDS*
 University of Texas Medical Branch, *MD*
 University of Texas Southwestern Medical Center at Dallas, *PhD in Biochemistry*
 University of Washington, *PhD in Pharmaceuticals*
 Washington University School of Medicine, *MD/PhD*

Internships

Sixty-two percent of the Class of 2015 (66 percent of respondents to survey's internship questions) reported completing at least one internship experience. Thirty-five percent of the class (nearly 38 percent of respondents to survey's internship questions) reported completing two or more internships. Those respondents reported on their internship experiences:



Number of internships for academic credit*

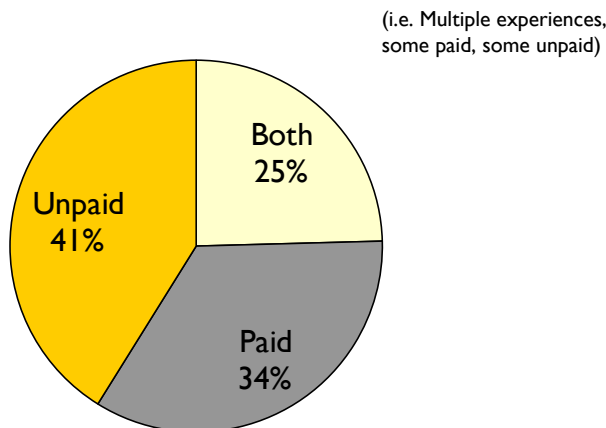
- 1 69.2 %
- 2 24.0 %
- 3 or more 6.7 %

Number of internships for experience only*

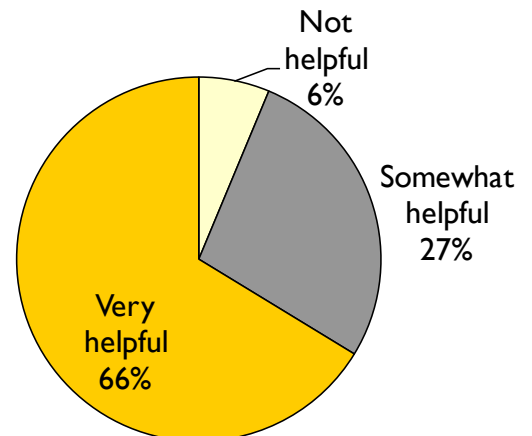
- 1 51.8 %
- 2 36.0 %
- 3 or more 12.3 %

*Percentages are out of graduates reporting having this type of internship experience.

Pay for internships



Helpfulness of internships





Evaluation

In addition to evaluating satisfaction with first-destination outcomes and the match between those outcomes and their expectations, graduates also reported on their satisfaction with Career Services interactions as well as overall satisfaction with their Southwestern University education.

Satisfaction with Career Services

Graduates reported their responses to the question, “How satisfied were you with Career Services regarding career-development guidance provided for securing your job/grad school acceptance?” Interactions with Career Services can include individual advising appointments, participation in group workshops/events, utilizing the resource library, etc. More detailed evaluations of each of these components are available through Career Services. Of students who reported using Career Services, respondents were:

- 41 % Very happy
- 42 % Satisfied
- 12 % Slightly unsatisfied
- 5 % Completely unsatisfied

Satisfaction with Southwestern

Graduates reported their responses to the question, “Based on your SU experience, how satisfied are you with your preparation for your [intended] job/graduate school program?” Of students who answered this question, respondents were:

- 49 % Very happy
 - 40 % Satisfied
 - 10 % Slightly unsatisfied
 - 1 % Completely unsatisfied
- 