

# Post-Graduate Survey Class of 2014 Highlights

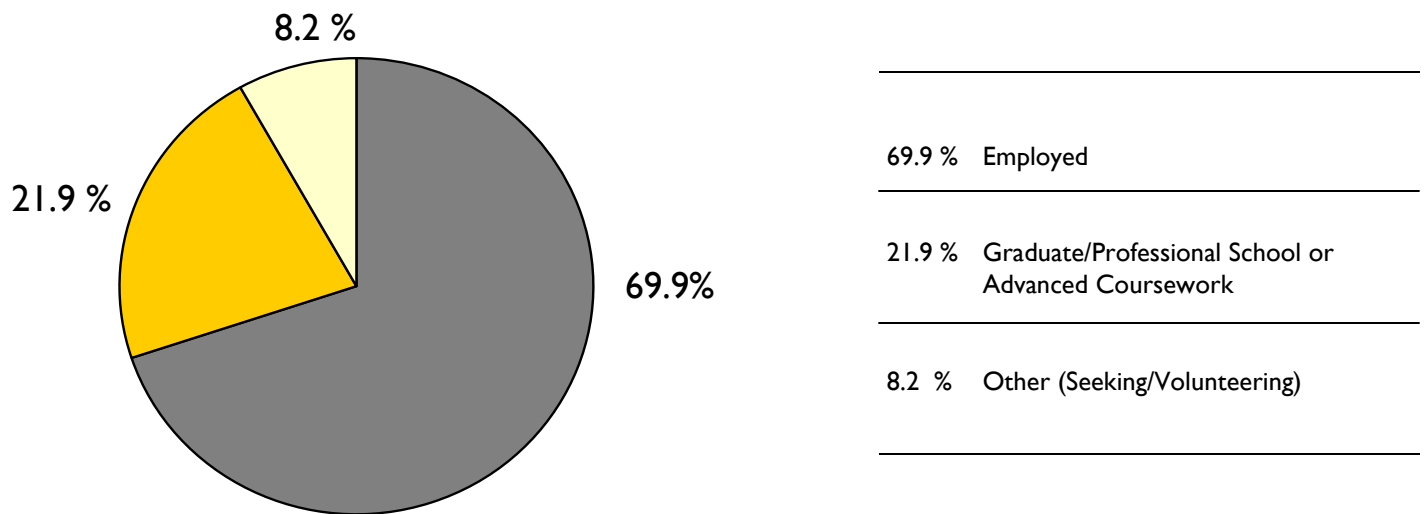
## About the Survey

The Class of 2014 Post-Graduate Survey, conducted by Southwestern University Career Services, was completed in early March 2015. Graduating seniors were contacted beginning in April 2014 via email, in person at Commencement in May, with a follow-up email in October, via three phonathon sessions in November 2014, December 2014 and February 2015 and with repeated follow-up emails and phone calls into March 2015. Of the 323 graduates from December 2013, May 2014 and August 2014 who make up this reporting class, Career Services obtained responses from 319 (99 percent of the class).

If you would like more information, please contact Career Services at [career.services@southwestern.edu](mailto:career.services@southwestern.edu) or 512.863.1346.

## Where is the Class of 2014 now?

Respondents reported their primary activity after graduation as:



## Responses by school / division

Forty-seven graduates earned two or more majors. Double-majors were tallied in each major for a look at responses by major and corresponding division/school. Percentages may not total 100 due to rounding.

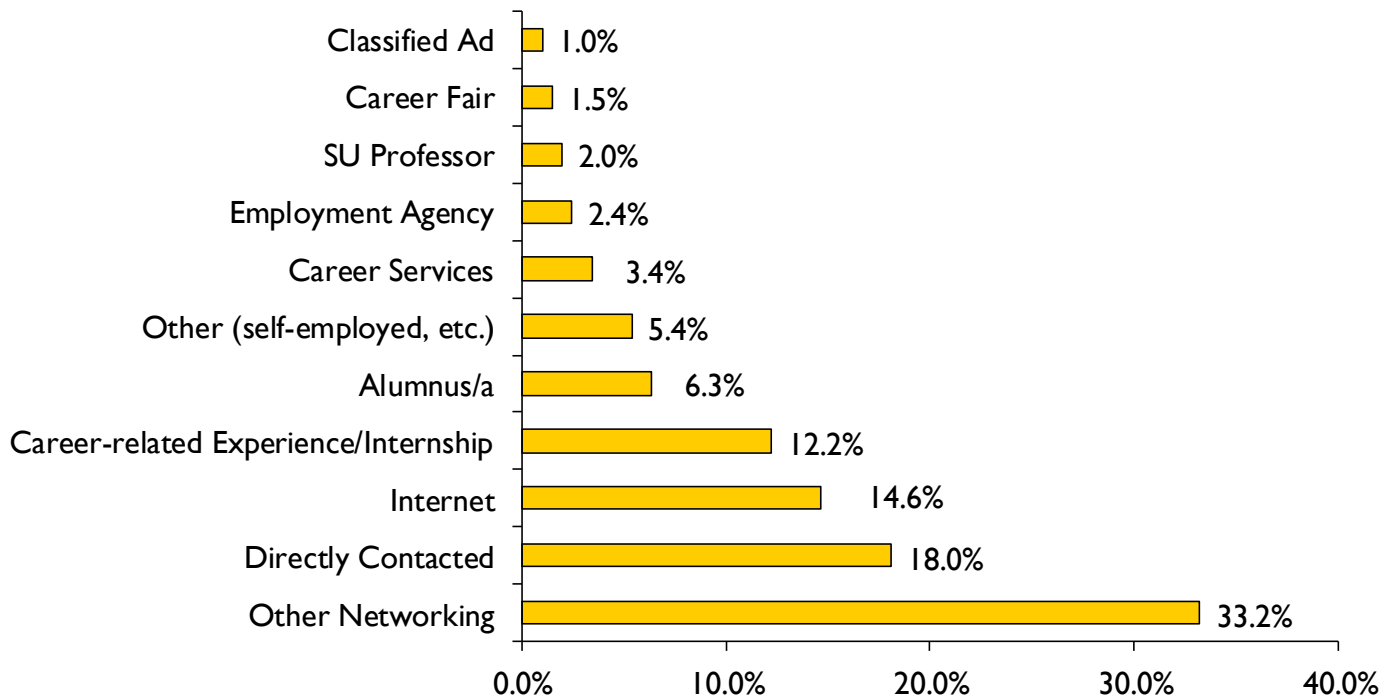
	<i>Employed</i>	<i>Graduate / Professional School / Advanced Coursework</i>	<i>Other</i>
Brown College of Arts and Sciences			
Division of Humanities	81.2 %	10.6 %	8.2 %
Division of Natural Sciences	53.7 %	40.3 %	6.0 %
Division of Social Sciences	71.8 %	21.1 %	7.0 %
Sarofim School of Fine Arts	76.9 %	17.9 %	5.1 %
Independent / Interdisciplinary majors	62.9 %	17.1 %	20.0 %

# Employment

Nearly 70 percent of all survey respondents reported entering the world of work upon graduation.

## How did they locate positions?

For employed graduates who reported the method by which they secured their positions, networking remained the most impactful search strategy. When also including more specific networking with alumni, professors and Career Services, nearly 45 percent of positions were secured through networking. Directly contacting employers followed closely behind the strategy of networking with family and friends. These two strategies continue to be the most effective for grads.



## Where are they working?

The majority (86 percent) of respondents work in Texas, while 10 percent work in 12 other states and 4 percent work internationally in China, Costa Rica, Czech Republic, Dominican Republic, Mexico, South Korea, Spain and Taiwan.

The most frequently represented work locations are:

- 86 % Texas
- 1.8 % California
- 1.8 % New York
- 1.3 % Colorado
- 0.9 % Washington, DC
- 0.9 % Mississippi
- 0.9 % New Mexico

## When did they begin their search?

Grads employed or seeking employment who responded about their job search process reported beginning:

- 24 % Before senior year
- 23 % Fall semester of senior year
- 21 % Beginning of spring of senior year
- 16 % End of spring of senior year
- 16 % After graduation

## What do they earn?

Respondents working full-time who reported annual salaries earn:

- 46% less than \$30,000
- 43 % \$30,000 to \$50,000
- 11 % more than \$50,000

# Employment

## Selected employing organizations and positions of the Class of 2014

Accenture, <i>Software Engineer</i>	PricewaterhouseCoopers, <i>Assurance Associate</i>
American Enterprise Institute, <i>Research Assistant</i>	Raise Your Hand Texas, <i>Digital Producer</i>
Arlington Public Library (via AmeriCorps), <i>Literacy Coordinator</i>	Reading Partners (via AmeriCorps), <i>Site Coordinator</i>
AXA Advisors, LLC, <i>Financial Advisor</i>	Roger Vester Inc., <i>Staff Accountant</i>
Belton Journal, <i>News Editor</i>	Round Rock ISD, <i>Spanish Teacher</i>
Christian Youth Theatre Austin, <i>Set Designer</i>	Seton Medical Center Williamson, <i>Clinical Assistant III</i>
City Year (an AmeriCorps program), <i>Tutor/Mentor</i>	Sierra Club, <i>Program Assistant - Our Wild America</i>
Clarksdale Baptist Church, <i>Youth and Music Minister</i>	SouthWest Collegiate Institute for the Deaf, <i>Head Women's Volleyball/Basketball Coach</i>
Comal ISD, <i>Middle School Orchestra Director</i>	Southwestern University, <i>Coordinator of Civic Engagement</i>
Dell Inc., <i>Inside Sales Account Manager</i>	SpareFoot, <i>Developer</i>
E'lou & Company, <i>Developer</i>	Swaton Language School, <i>English Teacher</i>
First Texas Bank, <i>Accounting Specialist</i>	Tauber Oil Company, <i>Investment Analyst</i>
Geico, <i>Management Development Program</i>	Teach for America, <i>Math Teacher</i>
Henery Press, <i>Editorial Assistant</i>	TEKsystems, <i>IT Recruiter</i>
Houston Astros, <i>Baseball Operations Apprentice</i>	Texas Commission on Environmental Quality, <i>Environmental Investigator</i>
Insight Global, <i>Technical Writer</i>	Texas Monthly, <i>Marketing Services Coordinator</i>
James Avery Jewelry, <i>Social Media Associate</i>	Texas Physical Therapy Specialists, <i>PT Technician</i>
Leander ISD, <i>Elementary Special Education Teacher</i>	Texas Senate Research Center, <i>Bill Analyst</i>
Main Street Hub, <i>Social Media Community Manager</i>	TGR Exotics LLC, <i>Zookeeper</i>
Media Sourcing, Inc., <i>Junior Developer</i>	US Government Accountability Office, <i>Computer Science (IT) Analyst</i>
Peace Corps (China), <i>Volunteer</i>	UT Southwestern Medical Center, <i>Research Assistant</i>
Pearson, <i>Proofreader and Copy Editor</i>	URS Corporation, <i>Chemist</i>
Phillips 66 Company, <i>Analytical/Environmental Chemist</i>	Waters & Kraus LLP, <i>Legal Assistant</i>
PhysAssist Scribes, <i>Scribe</i>	
Planned Parenthood of Greater Texas, <i>Health Center Assistant</i>	
Population Research Center (UT Austin), <i>Research Associate</i>	

A liberal education prepares students broadly for many kinds of jobs. In general, majors do not correlate directly with specific job titles. Instead, graduates evaluated their satisfaction with their outcomes, and how well their outcomes match their expectations and meet their interests. Those who reported on these questions stated:

### What type of employment is it?

- 2 % Post-graduate internship or fellowship
- 6 % Freelancer/Entrepreneur
- 7 % Volunteer service (e.g. AmeriCorps)
- 7 % Temporary/contract work assignment
- 78 % All other employment

### Is the work in their field of interest?

- 53% Completely
- 32 % Somewhat
- 15 % Not at all

### How satisfied are they with their outcome?

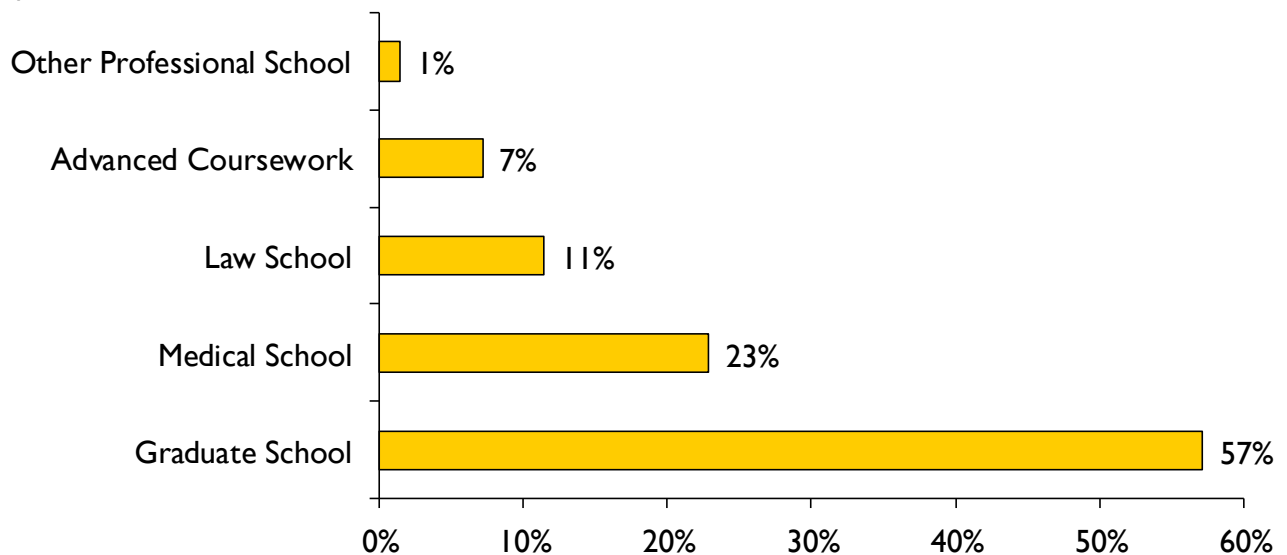
- 44 % Very happy
- 38 % Satisfied
- 12 % Slightly unsatisfied
- 6 % Completely unsatisfied

### How well does the outcome match their expectations?

- 35 % Meets expectations
- 37 % Close to meeting expectations
- 25 % Does not match but is happy
- 4 % Does not match and is unhappy

## Graduate / Professional School and Advanced Coursework

Nearly 22 percent of the Class of 2014 continued their education directly after graduation from Southwestern in graduate and professional programs or through advanced coursework such as prerequisite coursework for graduate study, additional coursework toward teacher certification, a second Bachelor's degree or other programs. Of those continuing their studies, they did so in the following ways:



### Where are they studying?

The majority (61 percent) of respondents continued their studies in Texas, while 38 percent are enrolled in 16 other states. One studied internationally in Taiwan (one additional student studied part-time in China through a program based in Washington, DC). The most frequently represented locations are:

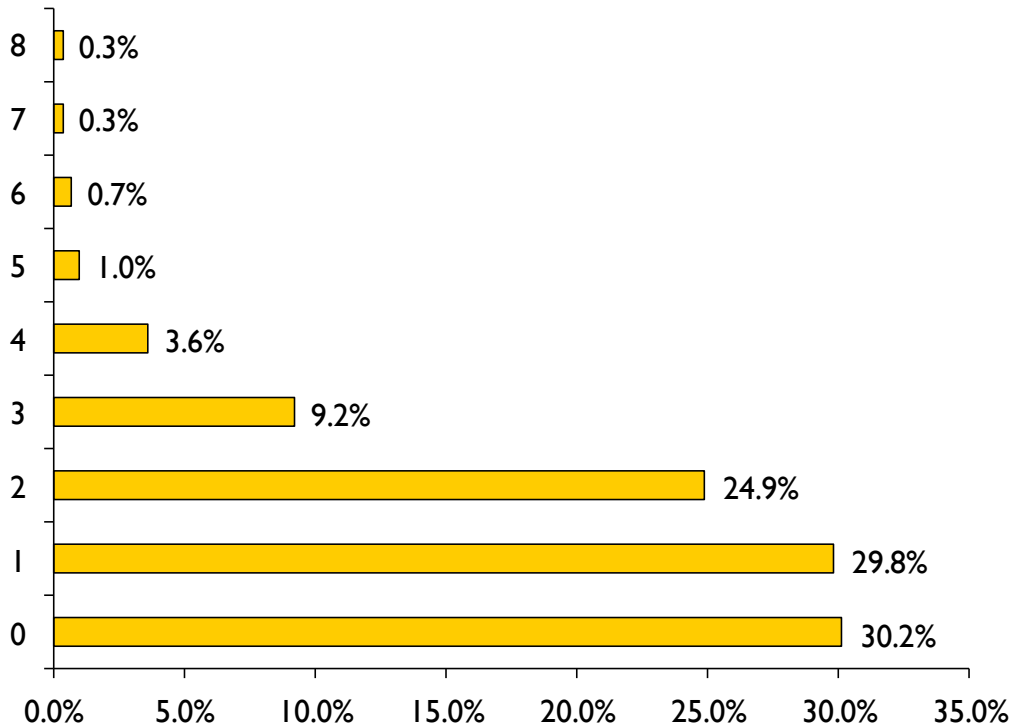
- 61 % Texas
- 7.2 % California
- 5.8 % Pennsylvania
- 2.9 % Arizona
- 2.9 % Louisiana
- 2.9 % Oklahoma

### Selected institutions / programs of study

Antioch University Seattle, *MA in Art Theory*  
 Arizona State University, *MM in Classical Guitar*  
 Baylor Law School, *JD*  
 Claremont Graduate University, *PhD in Interfield Economics-Political Science*  
 Emerson College, *MA in Journalism*  
 Johns Hopkins University, *MA in International Studies*  
 Keck Graduate Institute, *Master of Bioscience*  
 Lake Erie College of Osteopathic Medicine, *DO*  
 Oklahoma State University, *MBA*  
 Our Lady of the Lake University, *MSW*  
 Portland State University, *MA in Urban Planning*  
 Texas A&M Health Science Center, *MD*  
 Texas State University, *MS in Recreation and Leisure Service*  
 Texas Tech University Health Sciences Center El Paso, *MD/MPH*  
 Trinity University, *Master of Health Administration*  
 Tulsa University, *MEng in Petroleum Engineering*  
 University of California, Los Angeles, School of Law, *JD*  
 University of Houston, *MEd in Counseling*  
 University of North Carolina School of the Arts, *MFA in Costume Design*  
 University of Texas at Austin, *PhD in African and African Diaspora Studies & Philosophy*  
 University of Texas at Austin School of Law, *JD*  
 University of Texas Health Science Center, San Antonio, *DDS*  
 University of Texas Medical Branch, *Master of Physician Assistant Studies*  
 University of Texas Southwestern Medical Center, *MD*  
 University of the Arts, *MA in Museum Education*  
 University of Virginia, *MS in Accounting*

# Internships

Nearly 66 percent of the Class of 2014 (70 percent of respondents to survey's internship questions) reported completing at least one internship experience. Nearly 38 percent of the class (40 percent of respondents to survey's internship questions) reported completing two or more internships. Those respondents reported on their internship experiences:



## Number of internships for academic credit\*

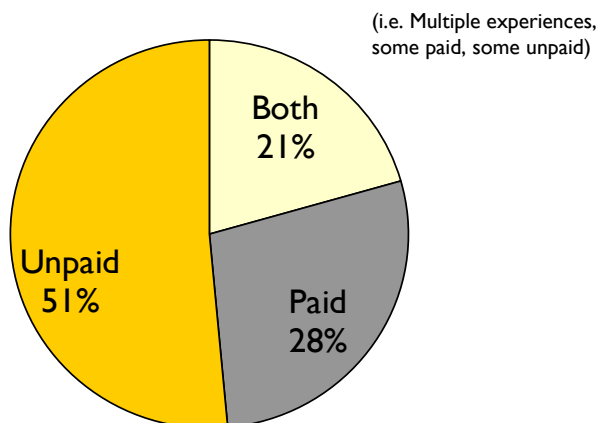
- 1 65.5 %
- 2 23.5 %
- 3 or more 10.9 %

## Number of internships for experience only\*

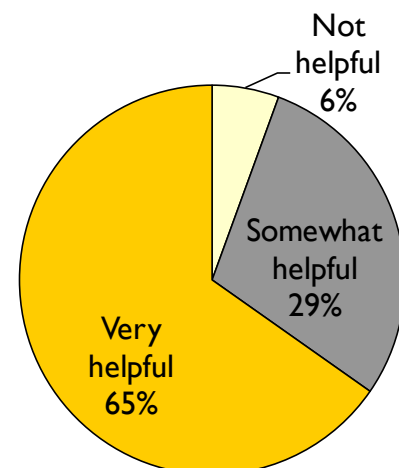
- 1 55.1 %
- 2 34.6 %
- 3 or more 10.2 %

\*Percentages are out of graduates reporting having this type of internship experience.

## Pay for internships



## Helpfulness of internships





## Evaluation

In addition to the evaluation of satisfaction with their outcome and the closeness of the match between their outcome and their expectations, graduates reported on their satisfaction with their interaction with Career Services as well as their overall satisfaction with their Southwestern University education.

### Satisfaction with Career Services

Graduates reported their responses to the question, “How satisfied were you with Career Services regarding career-development guidance provided for securing your job/grad school acceptance?” Interactions with Career Services can include individual advising appointments, participation in group workshops/events, utilizing the resource library, etc. More detailed evaluations of each of these components are available through Career Services. Of students who reported using Career Services, respondents were:

- 38 % Very happy
- 49 % Satisfied
- 11 % Slightly unsatisfied
- 2 % Completely unsatisfied

### Satisfaction with Southwestern

Graduates reported their responses to the question, “Based on your SU experience, how satisfied are you with your preparation for your [intended] job/graduate school program?” Of students who answered this question, respondents were:

- 40 % Very happy
  - 46 % Satisfied
  - 12 % Slightly unsatisfied
  - 1 % Completely unsatisfied
- 