

# Disaggregated Data

## 1<sup>st</sup> to 2<sup>nd</sup> Year Retention Rates

Cohort	Overall	Female	Male	First-Gen	Pell	Athlete	Greek
FY17	81%	82%	80%	79%	75%	78%	98%
FY18	86%	89%	82%	81%	83%	83%	99%
FY19	86%	87%	84%	81%	77%	84%	96%
FY20	81%	85%	75%	80%	82%	78%	97%
FY21	79%	84%	75%	76%	73%	80%	95%

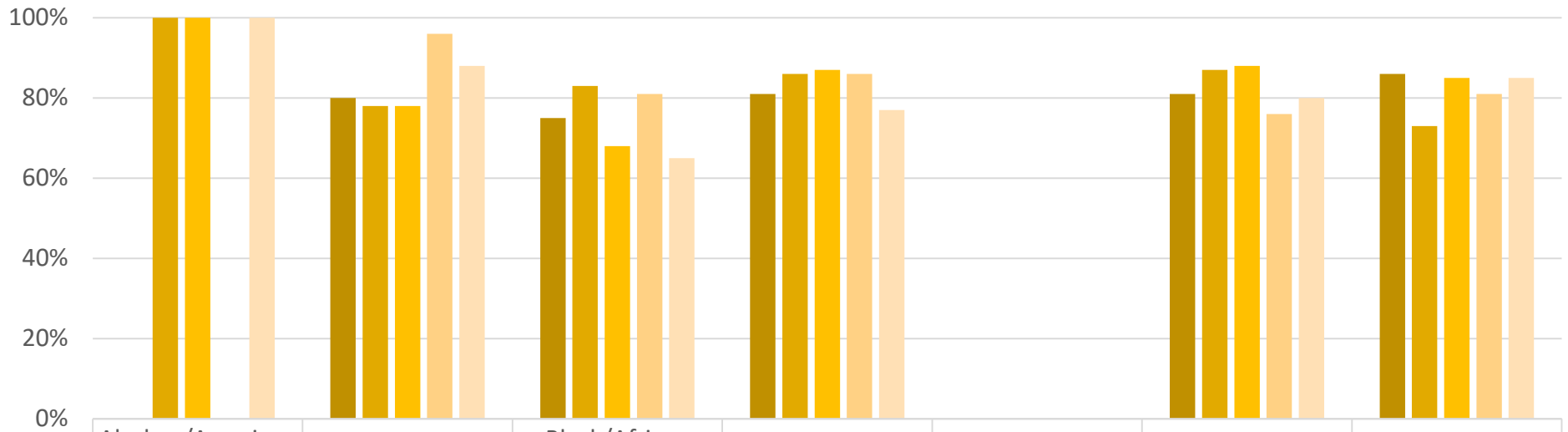
Cohort	Alaskan/ American Native	Asian	Black/ African American	Hispanic	Pacific Islander	White	Multiple Races
FY17	-	80%*	75%	81%	-	81%	86%
FY18	100%*	78%*	83%	86%	-	87%	73%*
FY19	100%*	78%	68%	87%	-	88%	85%*
FY20	-	96%	81%	86%	-	76%	81%*
FY21	100%*	88%*	65%*	77%	-	80%	85%*

\* 20 or fewer students in indicated category

# Disaggregated Data

## 1<sup>st</sup> to 2<sup>nd</sup> Year Retention Rates

Race/Ethnicity

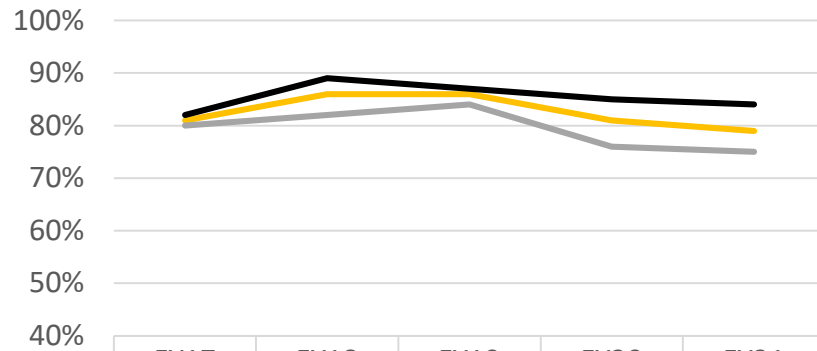


	Alaskan/American Native	Asian	Black/African American	Hispanic	Pacific Islander	White	Multiple Races
FY17		80%	75%	81%		81%	86%
FY18	100%	78%	83%	86%		87%	73%
FY19	100%	78%	68%	87%		88%	85%
FY20		96%	81%	86%		76%	81%
FY21	100%	88%	65%	77%		80%	85%

# Disaggregated Data

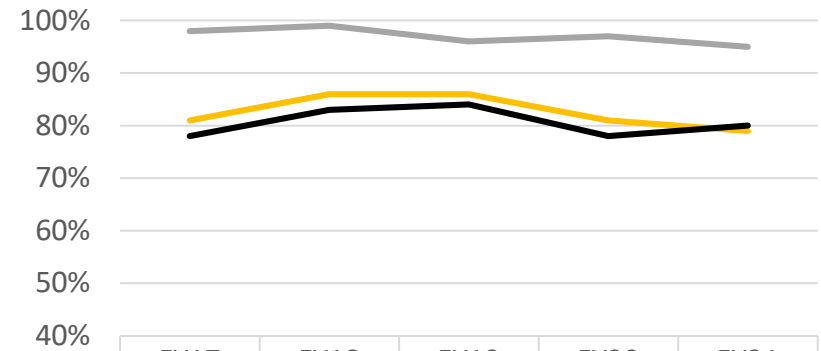
## 1<sup>st</sup> to 2<sup>nd</sup> Year Retention Rates

### Gender



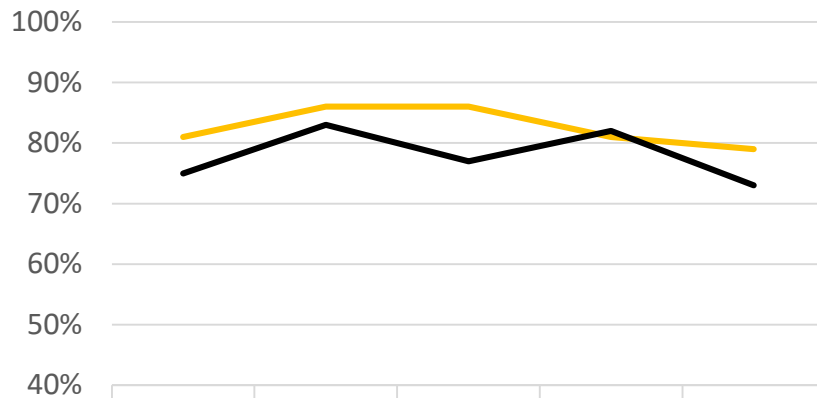
	FY17	FY18	FY19	FY20	FY21
Overall	81%	86%	86%	81%	79%
Female	82%	89%	87%	85%	84%
Male	80%	82%	84%	76%	75%

### Athletes & Greek Members



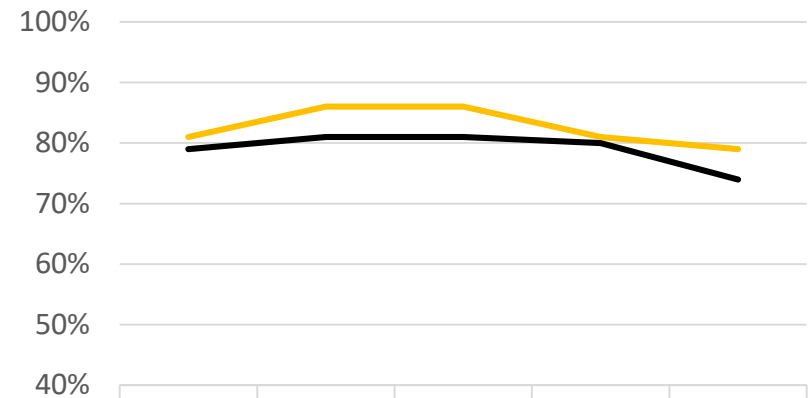
	FY17	FY18	FY19	FY20	FY21
Overall	81%	86%	86%	81%	79%
Athletes	78%	83%	84%	78%	80%
Greek	98%	99%	96%	97%	95%

### Pell Grant Recipients



	FY17	FY18	FY19	FY20	FY21
Overall	81%	86%	86%	81%	79%
Pell	75%	83%	77%	82%	73%

### First-Generation



	FY17	FY18	FY19	FY20	FY21
Overall	81%	86%	86%	81%	79%
First-Gen	79%	81%	81%	80%	74%