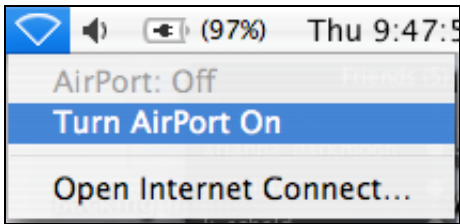


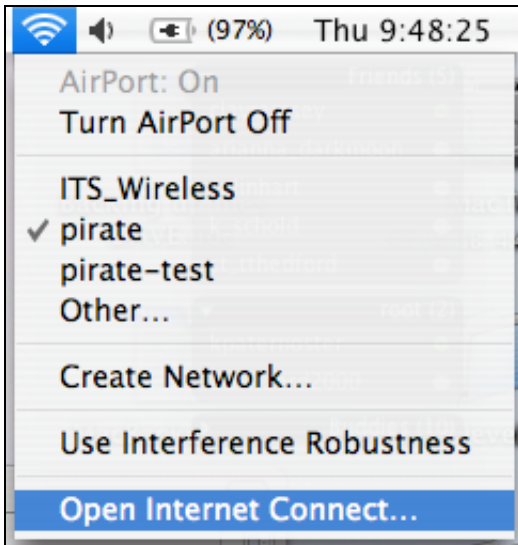
Connecting to the Campus Wireless Network

If your Macintosh is wireless-capable and you wish to use the Southwestern wireless network, here's what you need to do:

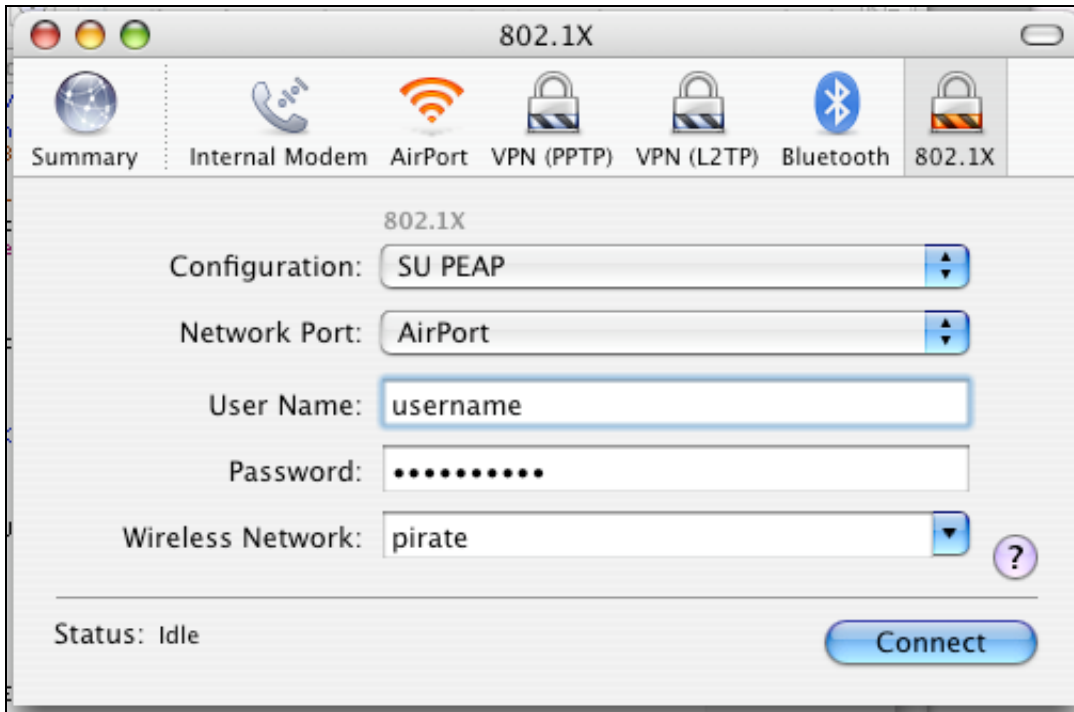
- 1) Turn on your wireless connection by going to the **AirPort icon** in your menu bar, clicking on it and pulling to **Turn AirPort on**.



- 2) Next, go back to the **AirPort icon** in the menu bar and pull to **Open Internet Connect**.

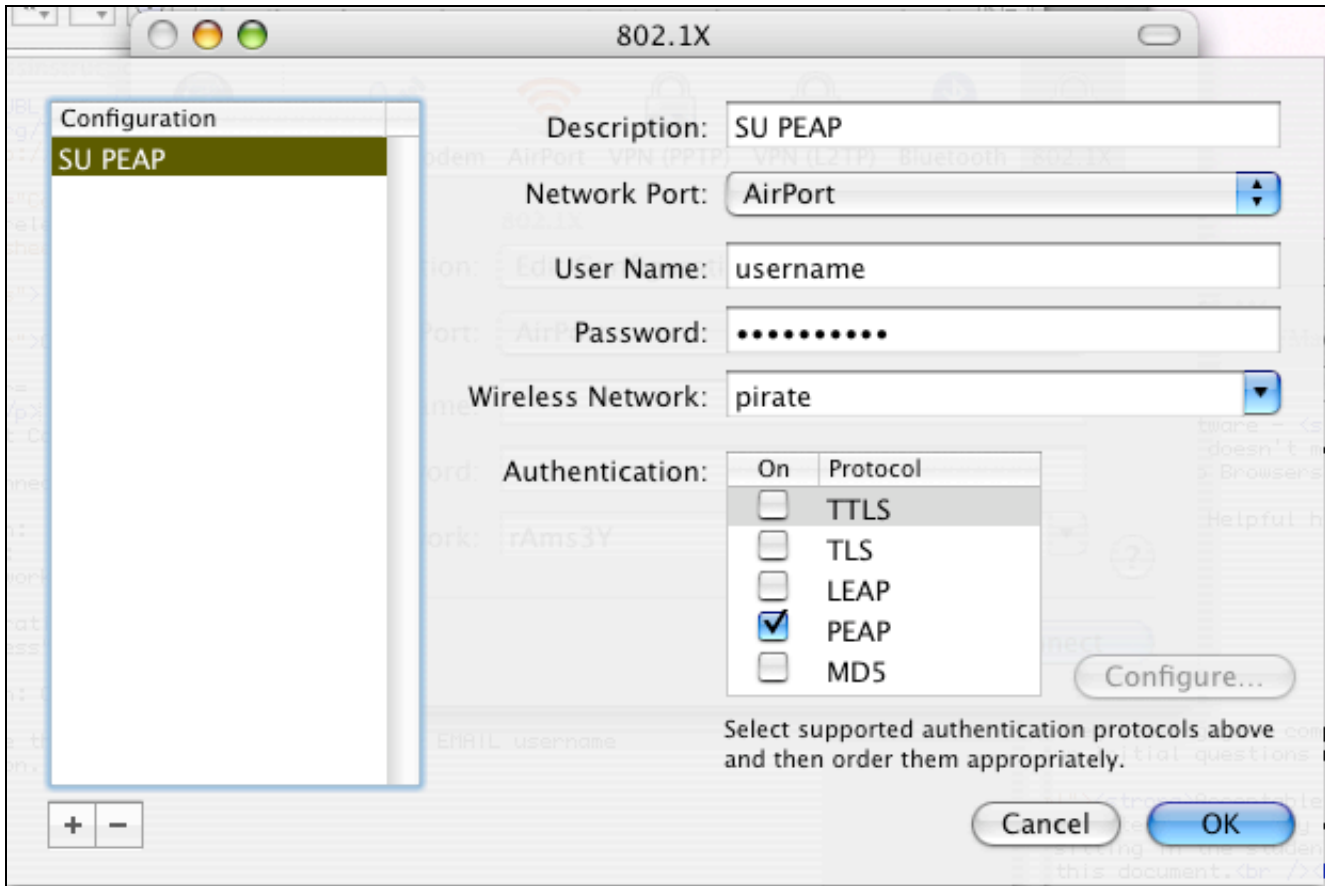


- 3) Click on the **File** menu and pull to **New 802.1X Connection...**
- 4) In Internet Connect, you need to click on the **802.1x icon**, then click on the drop-menu next to **Configuration** and select **Edit Configurations**.



5) In the **Configurations** window that opens, do this:

- Enter **SU Wireless** where it says **Description**
- Make sure the **Network Port** says **AirPort**.
- Enter your email username (the part before the @ sign) for **User Name**.
- Enter your email password for **Password**.
- Select **pirate** for **Wireless Network**.
- Deselect all except for **PEAP** in the field **Authentication**.
- Click on the OK button and save the configuration when asked.



6) Back in the **Internet Connect 802.1x** window, select **SU Wireless** from the configurations and click on the **Connect** button. You are now on the wireless network. To connect again at another time, click on the **AirPort icon** in the menu bar and select **pirate** from the list. You will not have to redo the **Internet Connection** configuration again.

[Click here to go back](#) to the Documentation list.

Southwestern University Information Technology Services

Contact us at:

- **email:** helpdesk@southwestern.edu
- **phone:** on-campus: ext. 7333, off-campus: (512) 819-7333
- **Knowledge Base:** <http://its.southwestern.edu/kbs>