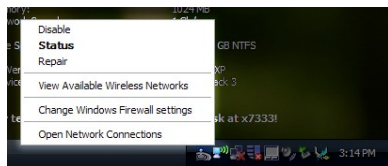
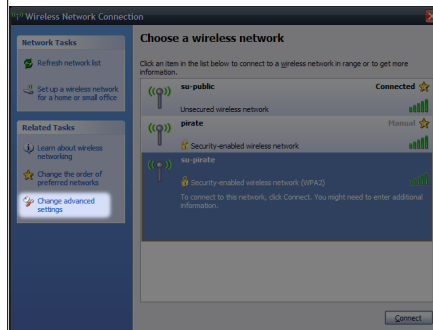


Connecting Your PC to su-pirate Windows XP

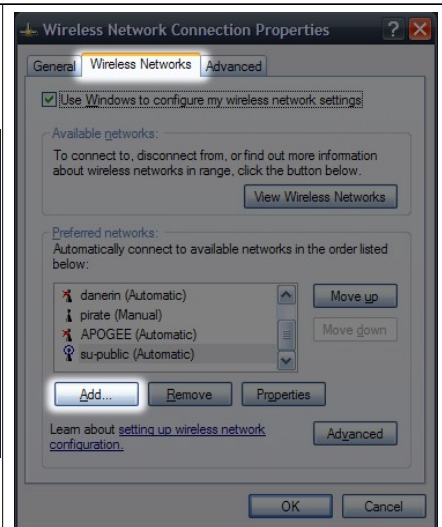
su-pirate is the name of the secure network at Southwestern. In order to connect your PC to the su-pirate network, a few configuration steps are required. Once these are completed, you will not need to do them again to connect your device to the su-pirate network.



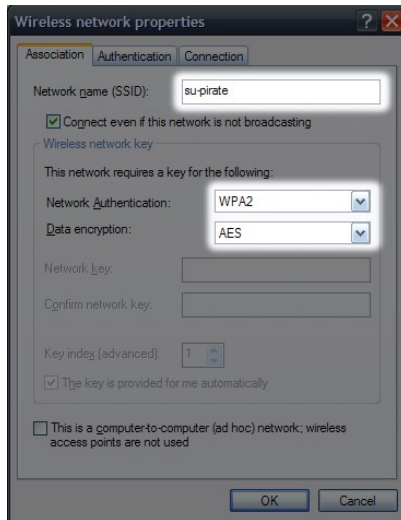
1. **Right-click** on the wireless icon in the system tray near your clock, then click **View Available Wireless Networks**.



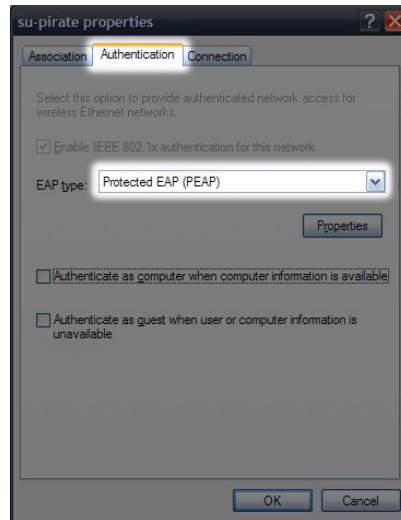
2. Click on **Change advanced settings**.



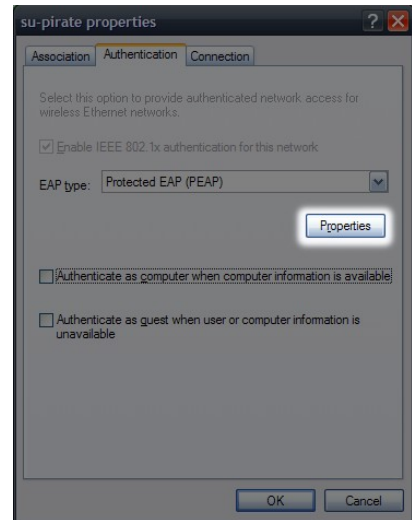
3. Click on the **Wireless Networks** tab at the top then click the **Add** button.



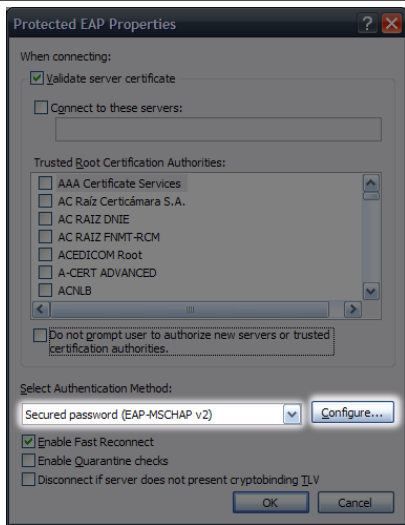
4. In the **Network name** box, enter su-pirate and under **Network Authentication** select **WPA2**. Then, under **Data encryption**, select **AES** (if it isn't selected automatically).



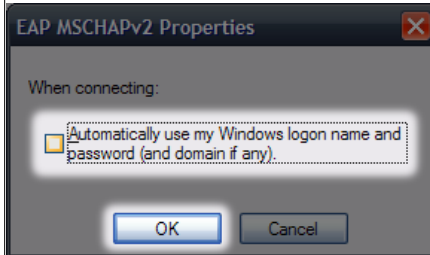
5. Click the **Authentication** tab, then in the **EAP type** select **Protected EAP (PEAP)**.



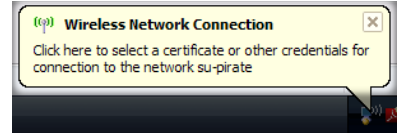
6. Click **Properties**.



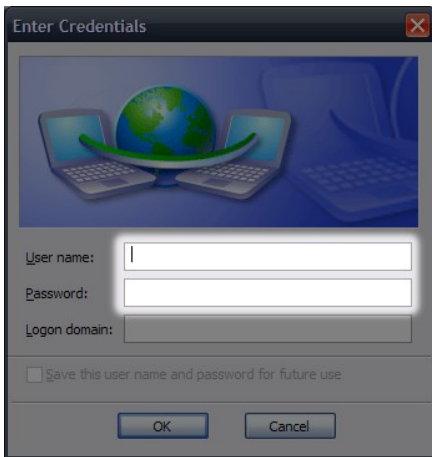
7. Under **Selected Authentication Method**, select **Secured password (EAP-MSCHAP v2)**, then click the **Configure** button.



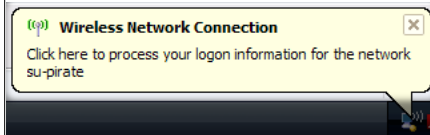
8. In the window that appears, **uncheck "Automatically use my Windows logon name and password (and domain if any)"**, then **click OK**.



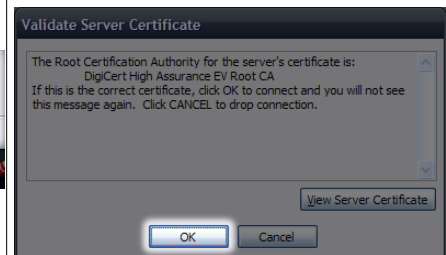
9. **Click** on the notification that pops up and prompts you for credentials.



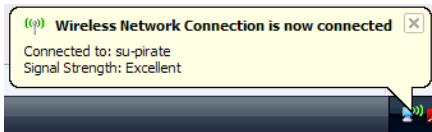
10. Enter your SUEID in the User name box, and your SUEID password in the Password box, then click OK.



11. **Click** on the notification that pops up asking to process your logon information.



11. Click the **OK button** in the "Validate Server Certificate" window that appears.



12. A notification should pop up to indicate a successful connection.

If you are not able to connect to the `su-pirate` network after completing all of these steps, please contact the Help Desk at x7333 [512-819-7333] or helpdesk@southwestern.edu